



Sandal Castle VA
Community Primary School

Headteacher: Caroline Butterworth
www.sandalcastleprimary.co.uk
office@sandal.wakefield.sch.uk
cbutterworth@sandal.wakefield.sch.uk
https://twitter.com/SandalCastleSch

Barnsley Road
Sandal
Wakefield
WF2 6AS
TEL:01924303525

24th April
Summer Term



Cash Free School



Reminder: We are a cash free school. Please pay for school visits or meals via Arbor. If you need support accessing this, please contact the school office.

Please Read!

Please can you discourage your child from bringing toys into school? They can cause unnecessary distraction and upset if they get lost or broken. Thank you for your support.



Treasure Hunt Winners!



1st – Luca P
2nd – Archie M
Joint 3rd – Caitin B and Ivy J

Spring Assessments

This week children in Years Reception–Year 5 will be bringing home their spring assessment data, based upon assessments that they undertook just before the Easter holidays. We hope that this will help you to understanding how your child is performing and to be able to support them further at home if required.

Attendance Well done everyone!

Keep up the amazing achievement.

The winning class of this week's attendance challenge is 4RQ with 100%

The whole school attendance is 94.57%

Thank you for your effort! Lets keep aiming for our whole school target of 96%

Class	%
4RQ	100.0%
2CW	99.5%
5SH	98.8%
FJP	98.1%
2TD	97.8%
5GS	97.1%
FJW	96.7%
FKW	96.6%
2DJ	96.6%
1JS	96.6%
1CLW	96.4%
3BJ	96.3%
4AD	96.1%
3SJ	95.0%
1JT	94.2%
5JG	93.8%
6SW	93.8%
3RW	92.1%
4RH	92.0%
6HY	91.3%
6LG	76.7%

29 th April 2026	1JS Class Assembly 9am
5 th -6 th May 2026	Year 4 Residential Newby Wiske
6 th May 2026	FKW Class assembly 9am
12 th May 2026	3RW Parent Workshop 1:30pm
13 th May 2026	3BJ Parent Workshop 1:30pm
20 th May 2026	FJP Class assembly 9am
2 nd June 2026	FIM
2 nd or 3 rd June 2026	Year 5 visit Nell Bank
23 rd & 24 th June 2026	EYFS Swithens Farm
6 th July 2026	4AD Ukulele concert
15 th July 2026	Bridlington Year 6
20 th July 2026	Inset Day
1 st September 2026	Inset Day

Yellow

99%/ 100% this is outstanding

Green

97%/ 98% is good

Amber

95% to 96% this is expected

Purple

93%/ 94% requires improvement-attendance officer involvement

Red

91%/ 92% level 1 cause for concern-EWO involvement

Safeguarding contact
For any safeguarding concerns please contact
legley@sandal.wakefield.sch.uk





The Chicks Have Hatched

EYFS were delighted to welcome some baby chicks into the world this week. The eggs hatched yesterday, and the children have thoroughly enjoyed watching the process unfold. It has been a wonderful hands-on learning experience, giving the children the opportunity to observe new life and talk about caring for living things.



Dinner Debate

This week in Collective Worship, we have been thinking about how sometimes we have to be creative when solving problems. Sometimes this means that we have to be creatively courageous!

Our big questions for this week are:

What new possibility or idea could you try this week?

What creative gifts do you think you have? How might you use them to help others?

FIM

Future in Mind Parent Workshop: Next Steps- transitions and emotional wellbeing Tuesday 2nd June at 9am

Year 6 parents are welcome to join us in school on Tuesday 2nd June at 9am for a workshop where you can learn about the impact of change on your child and common worries around moving from primary to secondary school. You can also gain tips on how you can support your child through this transition. We looking forward to seeing you.

OPAL Box

OPAL box- we are aiming to launch our Outdoor Play and Learning (OPAL) at the beginning of half term 6. For this to occur, we would really appreciate your support! Do you have any space buckets and spades? Or do you have any plastic toys- soldiers, cars, dinosaurs, fairies etc? If so, we would really appreciate any donations of these! If you would like to find out more about OPAL, please visit our website: Sandal Castle VA Community Primary School - Outdoor Play and Learning (OPAL) where we have an Amazon Wishlist . You can also visit: Home - Outdoor Play and Learning for more information.

Girls Football Team

Our girls' football team played against several other schools yesterday and performed brilliantly. They showed great teamwork, determination, and sportsmanship throughout the matches. Mrs Tindall and Miss Kitching are extremely proud of all the girls for their fantastic effort and attitude.



WELL DONE!

Summer Term Clubs

The clubs you signed your children up for, will begin w/c 27th April.

Well Done George!

George was lucky enough to play at the Etihad Stadium with Manchester City and even scored his 100th goal of the season! He was also excited to celebrate alongside England goalkeeper Jordan Pickford.



GOAL!

8th May

VE Day Menu



Fish-n-Chips

‘Lord Woolton Pie’

Jacket Potato of the Day

‘Dig for Victory’

Potatoes, Carrots & Cabbage

Gravy

Jam Roly Poly & custard

Or

Wartime Spiced Biscuit

A vibrant, cartoon-style poster for a 'Summer Attendance Challenge'. The background is a bright yellow vertical banner set against a light blue sky. At the top left is a large, 3D-style sun with a bright orange center and yellow rays. To its right are several fluffy white clouds. The title 'SUMMER ATTENDANCE CHALLENGE' is written in large, white, bold, sans-serif capital letters, curving across the top of the yellow banner. Below the title, on the left, is a yellow megaphone. On the right is a pink and white ice cream bar on a wooden stick. In the center of the banner, the challenge details are written in smaller, white, bold, sans-serif capital letters. At the bottom left, a blue toy car with a pink ice cream cone on its roof is shown. At the bottom right, there is a colorful plastic slide with green and yellow slides and a blue base. The bottom of the poster is decorated with a row of green leaves and several white daisies with orange centers.

SUMMER ATTENDANCE CHALLENGE

ATTEND SCHOOL EVERY DAY
FROM MONDAY 27 APRIL TO
FRIDAY 10 JULY TO EARN
YOURSELF A PLACE IN OUR
SUMMER ATTENDANCE
CELBRATION MORNING

SEND COFFEE & CHAT SESSIONS

Sandal Castle Community Primary School

Supporting SEND Parent Carers & School

♥ Support – A safe space for parent carers to share experiences and get advice.

♥ Connect – Build relationships with other parent carers, school staff and WPCF.

♥ Empower – Gain access to resources, guest speakers, and SEND guidance.

♥ Co-production – Strengthen home-school partnerships = better outcomes for children.



Join our SEND Coffee & Chat Sessions 9am - 10am

Thursday 29 January 2026

Thursday 19 March 2026

Friday 8 May 2026

Thursday 2 July 2026

Stanley Family Hub
Thursday 26th February
&
Wednesday 13th May
9AM to 11AM



SEND Parents and Carers Drop-in Stanley Family Hub

Are you a parent or carer of a child with SEND?
Drop in at your local family hub

We offer a supportive environment for parents or carers of SEND children to relax and talk with others. There will be information regarding local services and advice on how to support your child. Sessions can be tailored to people's needs in the group and are run monthly at hubs across our district.

Free tea, coffee, and biscuits provided. Free parking.

Please contact Stanley Family Hub 01924 303181 for more information.





Everyone Welcome!!! Please join us for Family Aspirations and Warm Space!!!!

Every Monday at Castle Family Hub 3:30pm to 4:30pm (Term time only). This is free of charge and everyone is welcome, where you and your children can gather for free in a warm, safe, and welcoming place. Our address is: Castle Family Hub, 255 Barnsley Road, Wakefield WF1 5NU. For more information, please call us on 01924 303376.

You'll be invited to enjoy a snack and soft drinks, and take part in planned activities. If you are not registered with us already, please register with us when you arrive. It's free of charge!!! We hope to see you then!!!

#castlefamilyhub #WakefieldFamiliesTogether



Yorkshire and North East Operations

Open Day

Come along to our Regional Operations Open Day to find out more about the work of National Highways, our suppliers and partners.



On **Saturday 9 May 2026 10am – 2pm** (last entry 1:30pm)

At **Calder View House, Peel Avenue, Calder Park, Wakefield WF2 7UA.**

(what3words:///invented.domestic.norms)

Chat to our traffic officers, control room operators and other team members.

Meet our partners.

Take part in fun activities and explore our highways vehicles.

Book a visit to the Regional Operations Centre upon arrival (please note, spaces are limited).

Get your tyres checked.

The last hour, 1–2pm, will be a quiet hour, with no loud sounds or bright lights.

No dogs allowed, except assistance dogs.

Free parking at OE, Calder Park, Wakefield, WF4 3GH (opposite the venue). Some disabled parking available near Calder View House itself.

Any questions?

Contact: nhopendayne@nationalhighways.co.uk

Wakefield Parent Education Hub

What is it?

A new, easy-to-use website has launched in Wakefield, giving families clear information, practical tools and helpful resources to support their child's health, development and learning.

Who is it for?

The website is for all Wakefield families, including families who home educate and those with children who have SEND (Special Educational Needs and Disabilities). The website can help support children and young people from birth up to 19 years old (or up to 25 years old for those with an Education, Health and Care Plan).

Why is it useful?

Created with local parents and partners, it brings trusted local and national guidance together in one place to help every child thrive.

What you'll find on the website:

Clear, easy-to-follow information on **health, safety and wellbeing** topics



Activities and resources to help build **resilience and confidence**



Easy-to-understand information and tips for talking about different topics at home



Practical advice and ideas to support with **feelings and emotions**



Speech, language and communication advice and support for under 5yrs.



Links to trusted local and national support



Scan the **QR code** to go to the **website!**
<https://www.riskandresilience.org.uk/>



SEND Drop-in

Stanley Family Hub Wednesday 13th May 2026 9.00am - 11am

Are you a parent or carer of a child aged 0-5 with SEND?
Drop in at your local family hub.

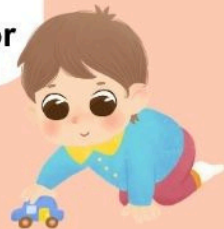
We offer a supportive environment for parents or carers of SEND children to relax and talk with others.

There will be information regarding local services and advice on how to support your child.

This session will be focused around Early Years and National Smile Month

Free tea, coffee, and biscuits provided. Free parking.

Please contact Stanley Hub 01924 303181 for more information or to register your interest.





The winners are:

1st place: 4RH

2nd place: 5JG

3rd place: 2DJ



A huge well done to the following children for their amazing contributions to the battle.



1		Max W 5JG
2		Adarsh S 2DJ
3		Carter K 3BJ
4		Henri S 4RH
5		Mikael K 4RH

6		6HY
7		Millie T 4RH
8		Ciara W 4RQ
9		Robin I 5JG
10		Sonny B



Next week's battle is:



Battle 1: 4AD, 4RQ, 4RH

Battle 2: Year 1, Year 2

Battle 3: Year 3, Year 5, Year 6