



Sandal Castle VA  
Community Primary School

Headteacher: Caroline Butterworth  
[www.sandalcastleprimary.co.uk](http://www.sandalcastleprimary.co.uk)  
[office@sandal.wakefield.sch.uk](mailto:office@sandal.wakefield.sch.uk)  
[cbutterworth@sandal.wakefield.sch.uk](mailto:cbutterworth@sandal.wakefield.sch.uk)  
<https://twitter.com/SandalCastleSch>

Barnsley Road  
Sandal  
Wakefield  
WF2 6AS  
TEL:01924303525

20th March  
Spring Term



## Easter Competition

We will be hosting our annual easter egg decorating competition on Thursday 26th March. If your child wishes to participate, they will need to hard boil an egg at home and decorate it as creatively as possible. All completed eggs will be showcased in the KS1 hall at 3:15pm- please do drop in and see these wonderful creations. It will be an egg-cellent gallery, with some smashing entries and we yolk to see you there!



## Non - Uniform Day

We will be holding a **non-uniform day on Friday 27th March** to raise funds to purchase some sand for our sandpit which will be located on our field. It is going to be a VERY big sand pit and we will be needing over £2000 to pay for this. This will be accessed by all of our children at lunchtimes. All donations will be greatly welcomed!  
On Arbor- school shop to donate

Class	%
4RQ	97.2%
1JS	97.0%
FJW	96.2%
6LG	95.8%
1CLW	95.7%
3RW	95.7%
FKW	95.1%
5SH	95.0%
6HY	95.0%
FJP	94.9%
2TD	94.8%
3SJ	94.2%
5GS	94.0%
5JG	93.8%
3BJ	93.3%
4RH	92.9%
4AD	92.7%
6SW	92.5%
2DJ	92.4%
2CW	91.7%
1JT	90.6%

## Attendance

Well done everyone!

Keep up the amazing achievement.

The winning class of this week's attendance challenge is 4RQ with 97.2%

The whole school attendance is 93.94%

Thank you for your effort! Lets keep aiming for our whole school target of 96%

24 <sup>th</sup> March 2026	Easter Church Service
25 <sup>th</sup> March 2026	6SW class assembly 9am
26 <sup>th</sup> March 2026	Easter Egg competition
27 <sup>th</sup> March 2026	non-uniform day- info above
22 <sup>nd</sup> April 2026	Year 1 - School trip to Cannon Hall- Read further info below!
29 <sup>th</sup> April 2026	1JS Class Assembly 9am
5 <sup>th</sup> -6 <sup>th</sup> May 2026	Year 4 Residential Newby Wiske
2 <sup>nd</sup> or 3 <sup>rd</sup> June 2026	Year 5 visit Nell Bank
6 <sup>th</sup> July 2026	4AD Ukulele concert
20 <sup>th</sup> July 2026	Inset Day
1 <sup>st</sup> September 2026	Inset Day

**Yellow**

99%/ 100% this is outstanding

**Green**

97%/ 98% is good

**Amber**

95% to 96% this is expected

**Purple**

93%/ 94% requires improvement- attendance officer involvement

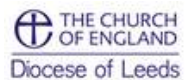
**Red**

91%/ 92% level 1 cause for concern- EWO involvement

## Easter Service

A polite reminder about our Easter Service- we are a Church of England School and because of this follow the legal requirements of the Church of England. As a school we visit St. Helen's Church three times a year, but there is no expectation that your child is a Christian or will become a Christian. If you wish for your child to withdraw, you would need to contact Mrs Butterworth formally by email.

Safeguarding contact  
For any safeguarding concerns please contact  
legley@sandal.wakefield.sch.uk



## One Life

This half term in our One Life lessons we will be learning about basic first aid and how to help ourselves and others in an emergency. Please can you support your child by making sure that they know their home address and a parent/carers phone number. This information is a really important life skill to have!

## Dinner Debate



This week we have been thinking about using our resilience- even in really sad or difficult times. Our big questions have been:  
How do we feel when things go wrong?  
Is it easy or hard to keep going when we're sad?

## Eco Warriors Community Litter Pick

Eco Warriors Community Litter Pick – Wednesday 25th (After School)

As part of our involvement in the Great British Spring Clean, our Eco Warriors will be leading a community litter pick after school on Wednesday 25th. We would love to invite parents to join us by bringing their children along to help tidy up our local area. This is a fantastic opportunity for families to work together, support our community, and show our children the impact we can have when we care for our environment. All equipment will be provided, and everyone is welcome!

Appeal for Spare Seeds or Bulbs

Forest school and Gardening Club have lots of exciting planting projects underway this term. Before we purchase new supplies, we wondered if any families may have spare seeds or bulbs at home that they would be happy to donate.

Any contributions—large or small—would be greatly appreciated and will help keep our school gardens blooming beautifully.

## Drum Lessons

Is your child in Year 3 or 4 and interested in learning the drums? If so, we have two spare places that are still available. Please know that there is a cost implication of approximately £80 per term. If you would like to secure a place, please let Mrs Butterworth know.

## Invacuation

We will be carrying out our usual termly lockdown drill at some point next week. As always, staff will reassure the children and remind them of the simple steps that help us complete a safe and successful invacuation.

Our pupils have been practising these routines for the past two years, and they are now a familiar part of our safeguarding procedures. The drill is calm, well-supported, and designed to help children feel confident and secure. If you have any questions or concerns, please contact Mrs Butterworth in the usual way – she'll be happy to help.

## Year 1 School Trip To Cannon Hall- 22/4/26



The trip is now available to be paid on Arbor. Please log in to your Arbor account to make the payment at your earliest convenience.  
**Thank you!**

**Eid Mubarak! We wish all of our Muslim community a happy, safe and loving Eid Mubarak today!**

## After School clubs go live at 7pm tonight (20/3/26) on Arbor

Our after-school clubs will go live for booking at 7:00pm this evening. To ensure every child has a fair opportunity to take part, we kindly ask that you book only one club per child at this stage.

Once initial bookings are complete, we will review availability and will contact you if your child is able to join additional clubs.

### TUESDAY

Boys Football (Year 3, Year 4, Year 5)  
Crown Green Bowling (Year 3, Year 4, Year 5)  
Girls Football (Year 3, Year 4, Year 5, Year 6)  
Handball (Year 3, Year 4, Year 5)  
KS1 Choir (Year 1, Year 2)  
Maypole Dancing (Year 4, Year 5, Year 6)  
Sewing Club (Year 3, Year 4)



### WEDNESDAY

Cricket (Year 5, Year 6)  
Dance (Year 1, Year 2)  
Lingotots (Year 1, Year 2)



### THURSDAY

Baking Club (Reception)  
Board Games (Year 1, Year 2)

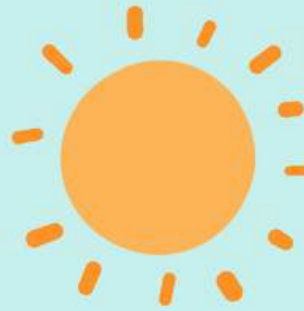




SANDAL | WALTON | PORTOBELLO

S | HELEN'S  
T | PAUL'S

Easter Sunday!  
**LET'S CELEBRATE  
TOGETHER!**



**5TH OF APRIL | 11AM  
AT ST HELEN'S CHURCH**

**CREATIVE ACTIVITIES IN  
KID'S CHURCH.  
EASTER EGG HUNT  
AFTER THE SERVICE**



# SEND COFFEE & CHAT SESSIONS

## Sandal Castle Community Primary School

### Supporting SEND Parent Carers & School

♥ Support – A safe space for parent carers to share experiences and get advice.

♥ Connect – Build relationships with other parent carers, school staff and WPCF.

♥ Empower – Gain access to resources, guest speakers, and SEND guidance.

♥ Co-production – Strengthen home-school partnerships = better outcomes for children.



Join our SEND Coffee & Chat Sessions 9am - 10am

Thursday 29 January 2026

Thursday 19 March 2026

Friday 8 May 2026

Thursday 2 July 2026

**Stanley Family Hub**  
Thursday 26th February  
&  
Wednesday 13th May  
9AM to 11AM



### SEND Parents and Carers Drop-in Stanley Family Hub

Are you a parent or carer of a child with SEND?  
Drop in at your local family hub

We offer a supportive environment for parents or carers of SEND children to relax and talk with others.

There will be information regarding local services and advice on how to support your child.

Sessions can be tailored to people's needs in the group and are run monthly at hubs across our district.

**Free tea, coffee, and biscuits provided. Free parking.**

Please contact Stanley Family Hub 01924 303181 for more information.





Everyone Welcome!!! Please join us for Family Aspirations and Warm Space!!!!

Every Monday at Castle Family Hub 3:30pm to 4:30pm (Term time only). This is free of charge and everyone is welcome, where you and your children can gather for free in a warm, safe, and welcoming place. Our address is: Castle Family Hub, 255 Barnsley Road, Wakefield WF1 5NU. For more information, please call us on 01924 303376.

You'll be invited to enjoy a snack and soft drinks, and take part in planned activities. If you are not registered with us already, please register with us when you arrive. It's free of charge!!! We hope to see you then!!!

#castlefamilyhub #WakefieldFamiliesTogether





## PORTOBELLO COMMUNITY CENTRE

### WHAT'S ON IN MARCH

#### MONDAY

##### **Sewcial Crafting Group**

10am to 1pm | £4

##### **UA3 Recorder Group**

1.30pm to 3.30pm

##### **Hot Chocolate Youth Club**

6.30pm to 7.30pm

11 to 16 year olds

FREE Pizza and drinks

Run by members of St Helen's Church  
Term time only

#### TUESDAY

##### **Portobello Craft &**

##### **Photography Group**

12.30pm to 2.30pm | £2

##### **AA**

7.30pm to 8.30pm | Donations

#### THURSDAY

##### **Portobello Drop In**

11am to 1pm | £3

Run by volunteers from local churches

##### **Zumba Chair Exercise with Sophie**

1pm to 2pm | £4

##### **Kung Fu**

7pm to 8pm - Beginners

8pm to 9pm - Advanced

Beginner subs: £3 adult/£2 child

First session free

#### FRIDAY

##### **Sewcial Crafting Group**

10am to 1pm | £4

#### SATURDAY

1st and 3rd Saturday

##### **Yorkshire Black Sheep Modellers**

10am to 1pm | £4

2nd Saturday

##### **Trinity Model Making Group**

10am to 1pm | £3

#### SUNDAY

##### **Strong Tower Christian Centre**

10.30am to 12.30pm

##### **Apostolic Faith Church**

1.30pm to 5.30pm

#### AVAILABLE FOR HIRE

The Portobello Community Centre  
is available for rent.

It's ideal for children's parties,  
meetings, and community events.

No alcohol is permitted.

Discounted rates are offered  
to Portobello residents.

#### Help with Subs

If you are on a low income & need  
support with subs please contact the  
office or group leader (in confidence)



portobellocommunitycentre



infopcfwakefield@gmail.com



07388 356008



www.portobellocommunitycentre.org

# Activities for 5-16 year olds this Easter



Funded by  
  
Department  
for Education



March 30th-  
10th April 2026

Activities are **FREE** for children and  
young people who receive benefits-  
related free school meals

Scan the QR code below to find activities and book a place:



Or visit:  
<https://eequ.org/happyhealthyholidayswakefield>





## FREE FOOTBALL COACHING AND MULTI SPORT ACTIVITIES



## DELIVERED BY QUALIFIED SPORTS COACHES



## ALL THE DETAILS

**WHEN: EVERY SATURDAY**

**TIME: 1PM – 3PM**

**WHERE: AGRIGG PARK**

**WHO FOR: 8-16 YEAR OLDS**

**UPDATES: FOLLOW <https://www.facebook.com/Hmpnot4me>**



## WF Happy Healthy Holidays Process for Schools

### **1. Purpose:**

The purpose of this briefing is to provide Schools with;

- An overview of the WF Happy Healthy Holidays process
- An overview of the support required from Schools

### **2. Background:**

Parents and carers throughout Wakefield may be eligible to benefit from the WF Happy Healthy Holidays programme for children and young people (aged 5-16) over the school winter break. The DfE have provided £1.3m to Wakefield Council to coordinate free holiday provision during 2026, including healthy food and enriching activities, for children who receive income-related free school meals.

The holiday provision will involve: helping young people learn new skills; enriching activities from sport to music, dance, drama, art, cooking and gardening; as well as improving socialisation; helping young people to have fun with friends this winter and importantly the provision of a meal before, during or after the activity/session.

### **3. How can Schools support the project?**

We have partnered with **Eequ** for our booking website and the booking link is going live on **Tuesday 3<sup>rd</sup> March at 8:00AM**. You can help support the programme by sending the message or flyers (attached in the email), which include the QR code to the booking site, to parents or carers **of all children within your school who are eligible for income based free school meals on this date.**

If you have any queries you can get in touch with us at [HAFWakefield@wakefield.gov.uk](mailto:HAFWakefield@wakefield.gov.uk)

Can you please let us know via the [HAFWakefield@wakefield.gov.uk](mailto:HAFWakefield@wakefield.gov.uk) inbox that you have sent out the message and also advise if you have had any issues in doing so as we are keen to ensure every eligible child and young person is aware of the programme.



Department  
for Education



wakefieldcouncil



Any enquiries call or text Sarah on 07388 356008

**FREE** TLG MAKE LUNCH  
EASTER FAMILY ACTIVITIES  
& LUNCH

**WEDNESDAY, 1 & 8 APRIL**  
**11.30AM - 1.15PM**  
**PORTOBELLO COMMUNITY CENTRE**

# MENINGITIS + SEPTICAEMIA

Meningitis  
now

Meningitis is a serious condition where the protective layers around the brain and spinal cord become inflamed. Septicaemia is when the bacteria enter the bloodstream to cause blood poisoning. They can happen to anyone, so it's important to know the symptoms and risks.

Early symptoms, such as fever, vomiting, aches, muscle pain, cold hands and feet and headaches, can look similar to common illnesses like colds or flu. But someone with meningitis or septicaemia will usually become seriously ill in a matter of hours. That's why it's crucial to keep checking on anyone who is unwell.

## MENINGITIS SYMPTOMS?

- fever
- a very bad headache (this alone is not a reason to get medical help)
- vomiting
- stiff neck
- dislike of bright lights
- rash (DO NOT wait for a rash to appear before seeking medical advice)
- confusion, delirium
- severe sleepiness, losing consciousness
- fits

## SEPTICAEMIA SYMPTOMS?

- fever and shivering
- severe pains and aches in limbs and joints
- vomiting
- very cold hands and feet
- pale or blotchy skin
- rapid breathing
- diarrhoea and stomach cramps
- red or purple 'bruised' or blotchy rash on skin that does not fade under pressure - do the glass test. On dark skin, check paler areas of the skin, such as the palms of the hands, soles of the feet, inside the mouth (roof), and the eyelids
- difficulty walking or standing
- severe sleepiness, losing consciousness

If you become worried about yourself, your child, or a friend, particularly if symptoms are getting worse, seek medical help urgently.

**EARLY TREATMENT CAN BE LIFE-SAVING.**



The winners are:

1<sup>st</sup> place - Year 2

2<sup>nd</sup> place - Year 4

3<sup>rd</sup> place - Year 3



Here are the top 3 children who contributed the most in their battle.

		<b>Violet J</b> Year 5
		<b>Henri S</b> Year 4
		<b>Elliot S</b> Year 5

		<b>Esther S</b> Year 3
		<b>Emilia P</b> Year 3
		<b>Oscar M</b> Year 1

		<b>Adarsh S</b> Year 2
		<b>George M</b> Year 2
		<b>Archie M</b> Year 6



Next week's battles are:



**Battle 1 - 1CLW, 1JT, 1JS**

**Battle 2 - Year 2, Year 3, Year 4**

**Battle 3 - Year 5, Year 6**

W/C 23<sup>RD</sup> MARCH

STAR TREAT FOR KS2 IS...

# CIRCUS

SKILLS



STAY ON  
YOUR STAR!

**Star Treat for EYFS  
and KS1 is a...**



**EASTER**

**EGG HUNT**

**Stay On  
Your Star!**



**W/C 23<sup>rd</sup> March**