



Sandal Castle VA
Community Primary School

Headteacher: Caroline Butterworth
www.sandalcastleprimary.co.uk
office@sandal.wakefield.sch.uk
cbutterworth@sandal.wakefield.sch.uk
<https://twitter.com/SandalCastleSch>

Barnsley Road
Sandal
Wakefield
WF2 6AS
TEL:01924303525

13th March
Spring Term



Easter Competition

We will be hosting our annual easter egg decorating competition on Thursday 26th March. If your child wishes to participate, they will need to hard boil an egg at home and decorate it as creatively as possible. All completed eggs will be showcased in the KS1 hall at 3:15pm- please do drop in and see these wonderful creations. It will be an egg-cellent gallery, with some smashing entries and we yolk to see you there!

Red Nose Day

On Friday 20th March, it is red nose day. We are selling red noses every morning, outside on the car park from 8:30am. This year the red noses cost: £2 (Cash Only) . Please note, we have only bought 240 so it will be first come, first served!

Attendance

Well done everyone!

Keep up the amazing achievement.

Class	%
2TD	100.0%
5GS	99.1%
5SH	98.3%
2CW	98.1%
6SW	97.9%
1JS	97.0%
4RH	96.9%
3SJ	96.3%
4RQ	95.4%
1CLW	94.8%
3RW	94.8%
4AD	94.8%
FJP	94.4%
5JG	93.8%
2DJ	92.9%
6LG	92.5%
1JT	92.2%
FJW	91.9%
3BJ	91.6%
6HY	91.3%
FKW	89.6%

The winning class of this week's attendance challenge is 2TD with 100%

The whole school attendance is 94.54%

Thank you for your effort! Lets keep aiming for our whole school target of 96%

Yellow	99%/ 100% this is outstanding
Green	97%/ 98% is good
Amber	95% to 96% this is expected
Purple	93%/ 94% requires improvement- attendance officer involvement
Red	91%/ 92% level 1 cause for concern- EWO involvement



Non - Uniform Day

We will be holding a **non-uniform day on Friday 27th March** to raise funds to purchase some sand for our sandpit which will be located on our field. It is going to be a VERY big sand pit and we will be needing over £2000 to pay for this. This will be accessed by all of our children at lunchtimes. All donations will be greatly welcomed!
On Arbor- school shop to donate

16th March 2026	4RH Ukulele concert
17th & 18th March 2026	Parents evenings
20th March 2026	Red Nose, Dress up Day and World Down syndrome day
24th March 2026	Easter Church Service
25th March 2026	6SW class assembly 9am
26th March 2026	Easter Egg competiton
27th March 2026	non-uniform day- info above
22nd April 2026	Year 1 - School trip to Cannon Hall- Read further info below!
29th April 2026	1JS Class Assembly 9am
5th -6th May 2026	Year 4 Residential Newby Wiske
2nd or 3rd June 2026	Year 5 visit Nell Bank
6th July 2026	4AD Ukulele concert
20th July 2026	Inset Day
1st September 2026	Inset Day

Year 1 School Trip To Cannon Hall- 22/4/26

The trip is now available to be paid on Arbor. Please log in to your Arbor account to make the payment at your earliest convenience. **Thank you!**

Safeguarding contact
For any safeguarding concerns please contact
legley@sandal.wakefield.sch.uk



Year 4 Parent Workshop



Half Term 4

Week commencing	Class, Day, Time
16.3.25	4RQ - Monday 16 th March
1:30- 2:45	4RH - Tuesday 17 th March
	4AD - Thursday 19 th March

Eco Warriors Community Litter Pick

Eco Warriors Community Litter Pick – Wednesday 25th (After School)

As part of our involvement in the Great British Spring Clean, our Eco Warriors will be leading a community litter pick after school on Wednesday 25th. We would love to invite parents to join us by bringing their children along to help tidy up our local area. This is a fantastic opportunity for families to work together, support our community, and show our children the impact we can have when we care for our environment. All equipment will be provided, and everyone is welcome!

Appeal for Spare Seeds or Bulbs

Forest school and Gardening Club have lots of exciting planting projects underway this term. Before we purchase new supplies, we wondered if any families may have spare seeds or bulbs at home that they would be happy to donate.

Any contributions—large or small—would be greatly appreciated and will help keep our school gardens blooming beautifully.

Careers Week – Monday 16th March to Friday 20th March

We are excited to announce that our whole-school Careers Week will take place from Monday 16th March to Friday 20th March. Throughout the week, children from EYFS to Year 6 will take part in our Big Dreams, Little Learners themed activities, exploring a wide range of jobs, meeting inspiring visitors, and learning about the skills and qualities needed for their future careers.

Pupils will enjoy hands-on activities, workshops, and talks from people across different industries. Our aim is to broaden aspirations, spark curiosity, and help every child discover the many possibilities open to them as they grow.

Friday: Dress-Up Day!

To end the week, we will be holding a special Dress-Up Day on Friday 20th March. Children are invited to come to school dressed as a job or career that inspires them. Outfits can be as simple or creative as you like—there is no need to buy anything new. We can't wait to finish the week with a celebration of big dreams and bright futures!

Damage to School Equipment

In cases of loss, damage or breakages of school books, furniture or equipment, damage or breakage of staff clothing or personal possessions, the school reserves the right to charge for the cost of replacements/ repair

Dinner Debate



This week in Collective Worship we have been thinking about the similarities and differences between Ramadan and Lent, and how for both religious events, resilience is needed. Our big questions for this week are:

How does helping others build resilience?
What small sacrifice could I make this week?

Parking!

Now that the weather is improving, please can we plea with you to start parking in the car park at Wakefield Sports and Social Club on Sandal Close Hall? We have permission to park there for free at drop off and collection times. It is an 8-minute walk from school and will massively help reduce congestion and dangerous parking outside our school site.

Eid Mubarak!

Sending early Eid Mubarak wishes for Friday 20th March! A polite reminder that our Muslim children will be authorised for one day to celebrate Eid. We hope that you have a wonderful weekend of fun and celebration.

One Life

This half term in our One Life lessons we will be learning about basic first aid and how to help ourselves and others in an emergency. Please can you support your child by making sure that they know their home address and a parent/carers phone number. This information is a really important life skill to have!

Parent Consultations

Our Parent Consultation meetings will take place on:

Tuesday 17th March, 15:30–18:00

Wednesday 18th March, 15:30–18:00

Each appointment will last 10 minutes.

Appointment slots are live on the Arbor Parent Portal and will remain open until 16th March at 13:00. We politely ask that only one appointment is booked on only one of the days. When booking your time slot please tick each guardian even if only one is attending as your booking will not process.

Please log in to Arbor during this time to book your appointment.

If you have any difficulty accessing the system, feel free to contact us and we'll be happy to help.

Reminder to Check Lost Property!



#LotsOfSocks

Celebrate with us

on **20th March**



Wear your favourite socks
as we celebrate everything
that makes us different,
and yet the same.



Scholastic Bookfair coming soon...

We love reading at Sandal Castle Primary School

**Celebrate our love of reading by coming to our Scholastic bookfair,
as every book purchased earns our school rewards to spend on
books for our children to enjoy!**



The bookfair will be held in the KS1 hall on the following dates: -

Tuesday 17th March 3.30pm to 6.00pm

Wednesday 18th March 3.30pm to 6.00pm

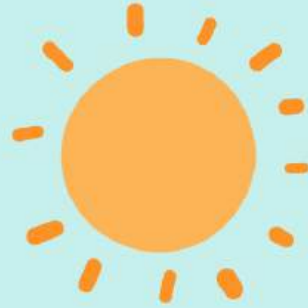
Please note that we are unable to take cash at the bookfair, card payments are accepted (bank card needed) by scanning a QR code at the fair or book vouchers can be purchased on the Scholastic website which then can be spent at the fair.

We hope to see you all there.



SANDAL | WALTON | PORTOBELLO

S | HELEN'S
T | PAUL'S



Easter Sunday!
**LET'S CELEBRATE
TOGETHER!**



**5TH OF APRIL | 11AM
AT ST HELEN'S CHURCH**

**CREATIVE ACTIVITIES IN
KID'S CHURCH.
EASTER EGG HUNT
AFTER THE SERVICE**



SEND COFFEE & CHAT SESSIONS

Sandal Castle Community Primary School

Supporting SEND Parent Carers & School

♥ Support – A safe space for parent carers to share experiences and get advice.

♥ Connect – Build relationships with other parent carers, school staff and WPCF.

♥ Empower – Gain access to resources, guest speakers, and SEND guidance.

♥ Co-production – Strengthen home-school partnerships = better outcomes for children.



Join our SEND Coffee & Chat Sessions 9am - 10am

Thursday 29 January 2026

Thursday 19 March 2026

Friday 8 May 2026

Thursday 2 July 2026

Stanley Family Hub
Thursday 26th February
&
Wednesday 13th May
9AM to 11AM



SEND Parents and Carers Drop-in Stanley Family Hub

Are you a parent or carer of a child with SEND?
Drop in at your local family hub

We offer a supportive environment for parents or carers of SEND children to relax and talk with others. There will be information regarding local services and advice on how to support your child. Sessions can be tailored to people's needs in the group and are run monthly at hubs across our district.

Free tea, coffee, and biscuits provided. Free parking.

Please contact Stanley Family Hub 01924 303181 for more information.





★🌈 Everyone Welcome!!! 🍷 Please join us for Family Aspirations and Warm Space!!!! 🥰🎉🌟

Every Monday at Castle Family Hub 3:30pm to 4:30pm (Term time only). This is free of charge and everyone is welcome, where you and your children can gather for free in a warm, safe, and welcoming place. Our address is: Castle Family Hub, 255 Barnsley Road, Wakefield WF1 5NU. For more information, please call us on 01924 303376.



You'll be invited to enjoy a snack and soft drinks, and take part in planned activities. If you are not registered with

us already, please register with us when you arrive. It's free of charge!!! 🥰 We hope to see you then!!! 🥰🎉

#castlefamilyhub #WakefieldFamiliesTogether 🥰



OVERVIEW FOR PARENTS HT4



KEY SUMMARY: The One Life framework emphasizes holistic “fitness”—physical, social, and mental. This guide focuses on two critical pillars: developing internal empathy through the SENSES framework and protecting children against modern digital risks like AI-generated content and online conduct.

EMPOWERING INTERNAL & SOCIAL COMPASSION

Activate Your Inner Cheerleader

Use non-judgmental self-talk to build resilience and manage internal threat responses.



Breaking the Stereotype

Avoid assumptions to treat every child as a unique, bright light.

NAVIGATING THE DIGITAL LANDSCAPE

The Core Pillars of Online Safety



Monitor Content



Contact

Monitor Content (harmful material), (unknown sources) (cyberbullying or image sharing).



Emerging AI & Deepfake Risks

Stay vigilant against AI-generated abuse material and sophisticated, motivated digital scams.



Critical Evaluation

Teach children to evaluate sources and identify algorithmic “rabbit holes” that lead to harmful content.



PORTOBELLO COMMUNITY CENTRE WHAT'S ON IN MARCH

MONDAY

Sewcial Crafting Group

10am to 1pm | £4

UA3 Recorder Group

1.30pm to 3.30pm

Hot Chocolate Youth Club

6.30pm to 7.30pm

11 to 16 year olds

FREE Pizza and drinks

Run by members of St Helen's Church
Term time only

TUESDAY

Portobello Craft & Photography Group

12.30pm to 2.30pm | £2

AA

7.30pm to 8.30pm | Donations

THURSDAY

Portobello Drop In

11am to 1pm | £3

Run by volunteers from local churches

Zumba Chair Exercise with Sophie

1pm to 2pm | £4

Kung Fu

7pm to 8pm - Beginners

8pm to 9pm - Advanced

Beginner subs: £3 adult/£2 child

First session free

FRIDAY

Sewcial Crafting Group

10am to 1pm | £4

SATURDAY

1st and 3rd Saturday

Yorkshire Black Sheep Modellers

10am to 1pm | £4

2nd Saturday

Trinity Model Making Group

10am to 1pm | £3

SUNDAY

Strong Tower Christian Centre

10.30am to 12.30pm

Apostolic Faith Church

1.30pm to 5.30pm

AVAILABLE FOR HIRE

The Portobello Community Centre
is available for rent.

It's ideal for children's parties,
meetings, and community events.

No alcohol is permitted.

Discounted rates are offered
to Portobello residents.

Help with Subs

If you are on a low income & need
support with subs please contact the
office or group leader (in confidence)



portobellocommunitycentre



infopcfwakefield@gmail.com



07388 356008



www.portobellocommunitycentre.org