



Sandal Castle VA
Community Primary School

Headteacher: Caroline Butterworth
www.sandalcastleprimary.co.uk
office@sandal.wakefield.sch.uk
cbutterworth@sandal.wakefield.sch.uk
<https://twitter.com/SandalCastleSch>

Barnsley Road
Sandal
Wakefield
WF2 6AS
TEL:01924303525

6th February
Spring Term



Exciting Outdoor Area Improvements in EYFS



We are pleased to share that work will soon begin on enhancing our EYFS outdoor area. This project is scheduled to start on 9th February and last 3 weeks. Please be aware that the work will temporarily impact our car park, and the number of available spaces will be reduced. We kindly ask parents and visitors to use the WYCO car park, which is only a short walk away. Thank you for your cooperation and support as we continue to improve our learning environment.

If you would like to follow the developments, please follow us on X: @SandalCastleSch where we will be posting regular photos!

Dates For Your Calendar

13 th February 2026	Dress to impress (more details below)
2 nd - 4 th March 2026	Year 6 residential Newby Wiske
4 th March 2026	1JT Class Assembly 9am
16 th March 2026	4RH Ukulele concert
5 th -6 th May 2026	Year 4 Residential Newby Wiske
2 nd or 3 rd June 2026	Year 5 visit Nell Bank
6 th July 2026	4AD Ukulele concert
20 th July 2026	Inset Day
1 st September 2026	Inset Day

Attendance

Well done everyone!

Keep up the amazing achievement.

The winning class of this week's attendance challenge is **3SJ, 5SH and 5GS with 98.3%**

The whole school attendance is **94.48%**

Thank you for your effort! Lets keep aiming for our whole school target of **96%**

Class	%
3SJ	98.3%
5SH	98.3%
5GS	98.3%
FJW	98.0%
2DJ	97.6%
3RW	97.4%
1JT	96.6%
FJP	96.3%
4AD	96.3%
5JG	95.8%
4RQ	95.5%
2TD	95.3%
4RH	95.1%
1JS	94.8%
6LG	94.5%
2CW	94.5%
6SW	94.3%
6HY	93.8%
3BJ	93.3%
1CLW	90.9%
FKW	88.7%

Our School Sports Team

We are currently seeking sponsorship for our school sporting teams to help purchase new kits. If you or your business would be interested in supporting us, we'd love to hear from you! Please get in touch with the school office for more details. Thank you for your support!

Donations Needed

We are needing approximately **40 hand trowels** for our children, to create a digging area on our field. If you have a spare garden trowel, we would be very grateful for the kind donation. We will keep you posted, if we discover any hidden treasure!

Dress to Impress!

To mark Children's Mental Health Week, we're inviting all children to Dress to Express on **Friday 13th February**. This is a fun and meaningful way for children to show their individuality and express how they're feeling through their clothes, colours, or accessories—there's no uniform for the day. The aim is to celebrate self-expression and open up conversations about feelings and wellbeing in a positive, inclusive way.

Yellow

99%/ 100% this is outstanding

Green

97%/ 98% is good

Amber

95% to 96% this is expected

Purple

93%/ 94% requires improvement- attendance officer involvement

Red

91%/ 92% level 1 cause for concern- EWO involvement

Safeguarding contact
For any safeguarding concerns
please contact
legley@sandal.wakefield.sch.uk





Football Boots & Trainers Donation Appeal

We would really appreciate any used football boots or trainers that may be sat at home no longer being used.

One of our PE coaches, friend is travelling to Uganda, where many children currently play football in bare feet. Any spare boots or trainers—children's or adult sizes—would make a huge difference and would be gratefully received.

If you are able to donate, please send items into school with your child or drop them off at the office.

Wellies for EYFS

Our Early Years team is in need of little wellies for the children.

If you have any spare pairs at home—in any small sizes—we would be very grateful for donations.

Having extra wellies means all children can enjoy outdoor learning, messy play, and exploring our EYFS environment in all weathers.

Please hand any donations to the EYFS staff or drop them off at the school office.

Thank you for your continued support!



Dinner Debate

This week in Collective Worship we have been thinking about the word justice and also the importance of social justice. Our big questions have been:

Do I always act fairly?

What does God think is unfair in this world?



Valentines Disco

Valentine's Disco – Years 1, 2 & 3

Tuesday 10th February, 3.15–4.15pm

KS1 Hall

Valentine's Disco – Years 4, 5 & 6

Tuesday 10th February, 3.15–4.30pm

KS2 Hall

Tickets: £3.00 (includes disco, drink and a snack).

Places are limited.

Available to purchase on Arbor school shop.

Please Keep Clear of the Car Park Gate

For everyone's safety, we kindly ask parents and carers not to stand near the car park gate during drop-off and pick-up times.

This area must remain clear so staff vehicles can enter and exit safely, and to ensure children are kept away from moving cars.

Thank you for helping us keep our school site safe for all.

EVERY SCHOOL DAY MATTERS



With the introduction of the new National Framework for Penalty Notices, new changes came into effect for Penalty Notice Fines issued after the **19 August 2024**. Penalty Notices are issued to change behaviour and reduce the number of school days lost during term time for the purpose of a holiday.

Please note the below changes that have been updated in the Wakefield Council Penalty Notice Code of Conduct **(When may a penalty notice for absence be appropriate?)**

- When a school becomes aware that the national threshold has been met, they must consider whether a penalty notice should be issued. The national threshold has been met when a pupil has been recorded as absent **for 10 sessions (usually equivalent to 5 school days) within 10 school weeks.**
- The National Framework states the following: If in an individual case the Local Authority believes a penalty notice would be appropriate, they retain the discretion to issue the penalty notice before the threshold is met. Wakefield Council retain the right to exercise this discretion Examples of when such discretion could be used are:
 - a) Where a pupil has 4 days of unauthorised absence that are G coded (unauthorised holiday) and where the absence immediately precedes a 5th day which is a school Inset day or an enforced closure and where this has previously occurred and a penalty notice was not issued for that absence.
 - b) Where a pupil has had fewer than 5 days of G coded absence and where this has previously occurred and a penalty notice was not issued for that absence.
 - c) Where a pupil has had fewer than 5 days of G coded absence, and where there has been a penalty notice issued for an absence, the Local Authority would issue a further penalty notice or seek a Parental Prosecution in line with the National Framework for Penalty Notices. *

*A school week means any week in which there is a least one school session. The 10 school-week period when the national threshold applies may span different terms or school years.

- Where a pupil has previously had an extended period of absence (unauthorised term time leave) of 20 or more school days, and where a penalty notice was issued for this absence, if the pupil then has a further extended period of absence, the Local Authority, may, in agreement with the pupil's school, seek a parental prosecution rather than issue a further penalty notice.

As per our school Attendance Policy (available on our school website), all applications for term time absence must be given in advance and provided in writing or via email. If no advance information is provided the absence will be recorded as unauthorised.

SEND COFFEE & CHAT SESSIONS

Sandal Castle Community Primary School

Supporting SEND Parent Carers & School

♥ Support – A safe space for parent carers to share experiences and get advice.

♥ Connect – Build relationships with other parent carers, school staff and WPCF.

♥ Empower – Gain access to resources, guest speakers, and SEND guidance.

♥ Co-production – Strengthen home-school partnerships = better outcomes for children.



Join our SEND Coffee & Chat Sessions 9am - 10am

Thursday 29 January 2026

Thursday 19 March 2026

Friday 8 May 2026

Thursday 2 July 2026

Venue

Castle Family Hub
Thurs 29th Jan: 9 - 11am

Stanley Family Hub
Thurs 26th Feb: 9 - 11am

Sunbeam Family Hub
Fri 20th March: 1:30 - 3pm

Castle Family Hub
Thurs 16th Apr: 9 - 11am

Stanley Family Hub
Wed 13th May: 9 - 11am

Sunbeam Family Hub
Fri 19th June: 1:30 - 3pm

Castle Family Hub
Wed 15th July: 9 - 11am



SEND Parents and Carers Drop-in

Are you a parent or carer of a child with SEND?

Drop in at your local family hub

We offer a supportive environment for parents or carers of SEND children to relax and talk with others.

There will be information regarding local services and advice on how to support your child.

Sessions can be tailored to people's needs in the group and are run monthly at hubs across our district.

Tea, coffee and biscuits provided. Free parking.

For more information please contact :

Stanley Family Hub: 01924 303181, Castle Family Hub: 01924 303376, Sunbeam Family Hub 01924 302333



ALL-PR

SPORTS & WELLBEING



4 - 12 YRS



**SANDAL
CASTLE
PRIMARY
WF2 6AS**



9AM-3PM

FEBRUARY FUN CAMP

✓ **SPORTS**

✓ **DANCE**

✓ **GYMNASTICS**

✓ **ARTS & CRAFTS**

✓ **TOURNAMENTS**

✓ **LOTS OF FUN!**

£20 PER DAY OR **£50** ALL 3 DAYS

TUES 17TH
(DAY ENDS WITH DODGEBALL TOURNAMENT)

WED 18TH
(SPORTS DAY THEMED AFTERNOON)


THUR 19TH
(DAY ENDS WITH DISCO & TALENT SHOW)




CHILDREN MUST BRING REFILLABLE WATER BOTTLE & PACKED LUNCH

ANY MORE INFORMATION CONTACT : allpro_sports_wellbeing@outlook.com

 All-Pro Sports & Wellbeing

 @all_pro_sports_wellbeing

 allpro_sports_wellbeing@outlook.com

★ Sandal Castle Primary School ★

★ *Little Learners,* ★
BIG DREAMS ★

★ Dive into the World of Work ★



Monday 16th March – Friday 20 March



★🌈 Everyone Welcome!!! 🍷 Please join us for Family Aspirations and Warm Space!!!! 🥰🎉🌟

Every Monday at Castle Family Hub 3:30pm to 4:30pm (Term time only). This is free of charge and everyone is welcome, where you and your children can gather for free in a warm, safe, and welcoming place. Our address is: Castle Family Hub, 255 Barnsley Road, Wakefield WF1 5NU. For more information, please call us on 01924 303376.



You'll be invited to enjoy a snack and soft drinks, and take part in planned activities. If you are not registered with

us already, please register with us when you arrive. It's free of charge!!! 🥰 We hope to see you then!!! 🥰🎉

#castlefamilyhub #WakefieldFamiliesTogether 🥰



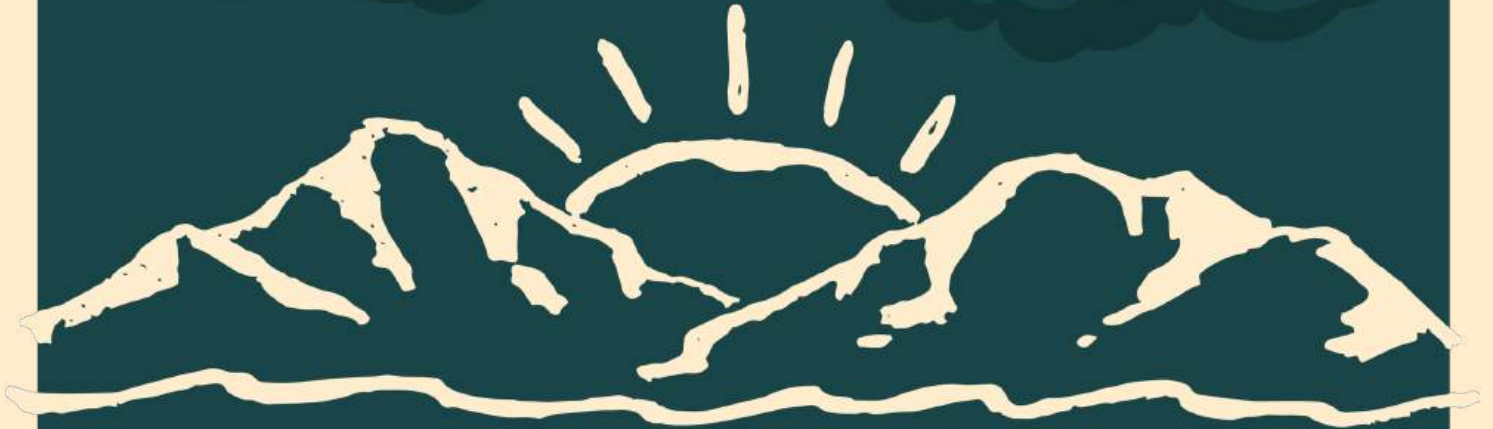


Yorkshire Wildlings



HOLIDAY

CAMP



16TH - 20TH
FEB
0830 -1500EVERYDAY!

**WOOLLEY EDGE SCOUT
CAMP (WF4 2LS)**

Looking for half-term fun that gets kids outside, laughing, and learning? Our forest school holiday camps are exactly what you need! Leave the tech at home and connect with nature! Den building, mud play, firelighting, archery, and so much more!

BOOK NOW TO SECURE YOUR PLACES!

07494666561

www.yorkshirewildlings.co.uk

@yorkshirewildlings



PORTOBELLO COMMUNITY CENTRE

WHAT'S ON IN FEBRUARY

MONDAY

Sewcial Crafting Group

10am to 1pm | £4

UA3 Recorder Group

1.30pm to 3.30pm

Hot Chocolate Youth Club

6.30pm to 7.30pm

11 to 16 year olds

FREE Pizza and drinks

Run by members of St Helen's Church

Term time only

TUESDAY

Portobello Craft &

Photography Group

12.30pm to 2.30pm | £2

AA

7.30pm to 8.30pm | Donations

WEDNESDAY

Portobello Baby & Toddler Group

Wed, 4th and 11th Feb

9.15am to 11am

£1 adults / £1 baby or toddler

MAKE LUNCH HOLIDAY LUNCH

Wed, 18 February - 11.30am to 1.15pm
FREE crafting activities + 2 course meal

BOOKING ESSENTIAL :

Text Sarah on 07388 356008

For families needing an extra hand in the holidays

THURSDAY

Portobello Drop In

11am to 1pm | £3

Run by volunteers from local churches

Zumba Chair Exercise with Sophie

1pm to 2pm | £4

Kung Fu

7pm to 8pm - Beginners

8pm to 9pm - Advanced

Beginner subs: £3 adult/£2 child

First session free

FRIDAY

Sewcial Crafting Group

10am to 1pm | £4

SATURDAY

1st and 3rd Saturday

Yorkshire Black Sheep Modellers

10am to 1pm | £4

2nd Saturday

Trinity Model Making Group

10am to 1pm | £3

SUNDAY

Strong Tower Christian Centre

10.30am to 12.30pm

Apostolic Faith Church

1.30pm to 5.30pm

If you are on a low income & need support with subs
please contact the office or group leader
(in confidence)



portobellocommunitycentre



infopcfwakefield@gmail.com



www.portobellocommunitycentre.org



07388 356008